



Huntin' Fool Map Center

Part 1 - Getting Public and Private Land Ownership Right on Your GPS

By Kirt Connelly –Huntin' Fool IT Manager

The Huntin' Fool Map Center

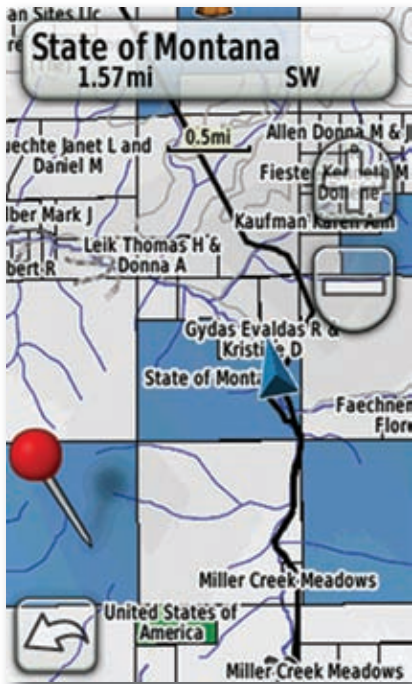


Anyone that knows me knows I'm a technology geek and anytime I can combine that with hunting I'm all over it. I'm always looking for the latest gadgets or tools that might assist me on my hunts. I also have a mapping background and let's face it, when hitting the field a good map is priceless. Because I'm a geek, I've always wanted all of my maps in the palm of my hand whether on a smart phone, my GPS, or even a laptop! Last year while hunting the 4th season in Colorado with my father-in-law we encountered a private piece of property in the middle of the area we were hunting. This is all too common while hunting late rut hunts in states like Colorado. I had obtained a BLM map with private and public boundaries and created my own custom map. To be safe, I even contacted the local county assessor for ownership and legal boundaries. Using my laptop and other "map geek" tools I painstakingly plotted out the boundaries of this private piece into my GPS point by point. Deer were moving on and off this property all day and we needed to know the boundary in order to hunt the area properly especially since in a state like Colorado they don't have to post private property boundaries. After hours and hours of plotting and inputting, we were set up.

Fast forward to 2010 and to the updated *Huntin' Fool Map Center*. This article is part 1 of 2 which will introduce you to some new and exciting maps and tools available to you for the upcoming hunts. We were introduced to a product here in the office that we have been waiting years for, an easy to use 24K topo map product for your GPS with land ownership overlaid! *Huntin' Fool* is now offering a mapping product for Garmin GPS's that have land ownership, game management units, roads, water, geographic place names, and many other layers all overlaid on a 24K topographic base map. To top it off, they are very easy to use. With newer GPS models, simply plug in a pre-loaded microSD or SD memory card into your GPS and the entire state is automatically loaded. Land ownership is distinguished with standard BLM colors, so public and private boundaries are

***Know Exact Public Land Boundaries
When You Are in the Field!***





LAND OWNERSHIP GPS MAPS

Features include:

- Public Lands with Unique Colors
- Section Lines and Numbers
- Roads - City, Highway, and Backroads
- Topography - 20 ft contour intervals - 1:24K Equivalent
- Game Management Unit Boundaries
- Geographic Names (cities, creeks, manmade features, etc)
- Water Data (creeks, rivers, lakes)
- National Forest Roads and Trails
- Ownership Names (Montana Only)

*Some features not available in all states. See www.huntinfool.com/maps/ for full details.

easy to distinguish. The beauty of having this information on your GPS is you immediately know where you are. Combine this with the 24K topographic map background and you have one of the ultimate hunting tools in the palm of your hand. When I first saw this, my thoughts immediately raced back to the fall of 2009 and I couldn't help but shake my head. With this product and within minutes, I could have had the same information plus even more that had taken me hours to compile and put together.

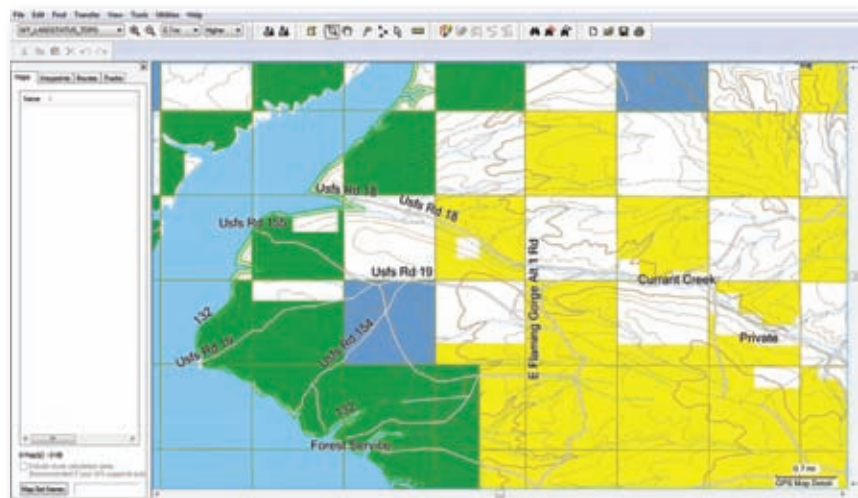
The map works with almost any Garmin GPS. A complete list of compatible units can be found on our Map Center page online at www.huntinfool.com/maps/. Many GPS units have an expandable SD memory slot which will allow you to just

plug in an SD card and go. However, for those GPS units that don't have a memory slot but still support maps, a download version of the map is available. You will install the map to your computer then send it to your GPS. The download version is nice because you can use it on your computer to plan your trip and view your waypoints and tracks on the larger screen. You can also install the map on your laptop as a reference while driving down the road, essentially using your laptop as a GPS but with a very handy larger screen.

The land ownership information data is taken from the most current survey information available from the state agencies. Due to some inaccuracies of GPS units it is important to use this tool as a reference and not as a

COMPUTER VERSION

A download version is also available and is nice because you can use it on your computer to plan your trip and view your waypoints and tracks on the larger screen. This allows you to edit your waypoints and routes on your computer then easily transfer them right to your GPS.



legal representation of the boundary. If you run into any boundary issues or concerns you should always contact the local county or city for the latest plat or survey maps as these GPS maps will never replace the actual surveyed maps. These will still be a great reference and extremely handy tool in the field.

These GPS maps are available in most of the states we cover including Arizona, California, Colorado, Idaho, Montana, New Mexico, Nevada, Oregon, Utah, Washington, and Wyoming. You will be able to purchase these new and exciting maps from our Map Center online at www.huntinfool.com/maps/. If you have a hunt where private land could possibly be an issue or just want 24K topo maps on your GPS, be sure to pick up these maps for your GPS today.

The July issue will cover part 2 of our updated Map Center and will include some very exciting new maps for anyone looking to hunt Colorado this fall.

